

## Design an entry sequence

The entry to a home is best considered as a sequence that begins at the point where you arrive on your property. A good design carefully choreographs each step of your arrival, whether by car or on foot. The approach to a traditional residence might focus on the formality and grandeur of the house, leading you past tidy gardens into a parking court on axis with an ornately detailed door. By contrast, the entry to a vacation home in the mountains might encourage you to wander through a wooded setting before depositing you at a rustic door sheltered beneath a deep overhang. In either scenario, the entry door serves as the final step in your progression home, marking the threshold at which you transition from your public life into your private one. Here are some examples to follow when creating an appropriate entry sequence for five common home styles.

*Reid Highley is an architect in Chapel Hill, N.C.*

### TRADITIONAL

A traditional house is designed using the classical orders, which provide a system of rules that emphasize organization and balance. The entry sequence of these homes is similarly regimented and further underscores the formal nature of traditional houses. The approach to the house pictured here arrives on axis with the entry door. The driveway terminates at a parking court that extends across the front of the house. The plantings are simple and formal, with sculpted topiaries and orderly planting beds.



Tall trees form a natural boundary for the site and focus the eye on the main facade of the house.

Sculpted hedges act as walls marking the edges of the parking court.

A large parking court provides plenty of space for the formal reception of guests.

A pair of piers topped with planted urns marks a clear transition to the private sphere.

The entry drive is straight and arrives directly on axis with the entry door, emphasizing the rigorous symmetry of the architecture.

## VICTORIAN

Victorian houses are not demure; they highlight the playfulness and exuberance of their era. Beginning at an ornamental iron fence, a brick path leads across a well-kempt lawn to the porch of this Victorian home. Planted urns and vibrantly colorful flowers are grouped at the house's foundation, a fitting complement to the showy millwork. The porch provides visitors an opportunity to pause, relax, and be seen.



The generously sized wraparound porch serves as an outdoor living room.

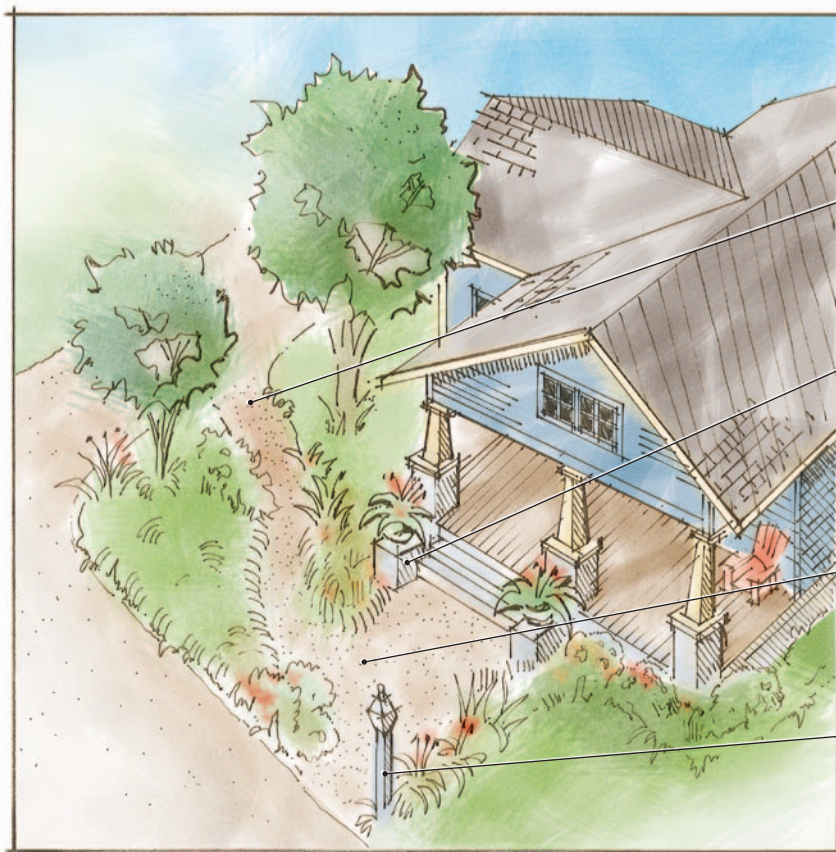
An intricate iron fence reflects the ornate wood trim of the porch and identifies the dividing line between public and semipublic space.

The herringbone-pattern brick walk blends with the rich material textures of the house.

A lush landscape with showy specimen plants extends the feeling of fantasy and romance that typifies Victorian-style architecture.

## CRAFTSMAN

The Craftsman house attempted to bring architecture closer to nature as a counterpoint to the architecture of the Industrial Revolution. The approach to this Craftsman bungalow is informal and follows a meandering gravel path among informal planting beds. Decorative planters greet visitors at the steps of the simple front porch. Every element of the entry sequence feels natural and unforced, a fitting reflection of the casual personality of the Craftsman style.



A meandering walkway slowly reveals the home's entry during the approach, creating a casual experience.

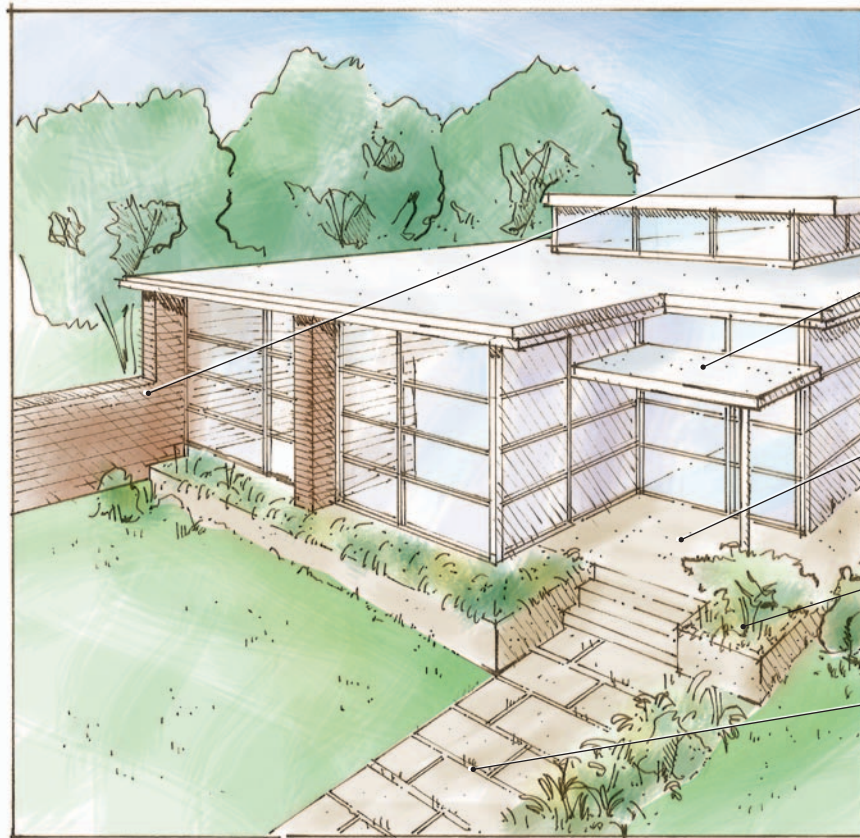
Elevated planters define the entry point to the porch and mark the boundary between natural and manmade realms.

Crushed-stone rather than brick paths lend an informal, natural quality to the yard.

A lamppost at the street entrance marks the beginning of the procession to the house.

## MODERN

The approach to this modern home is crisply detailed with precise edges and distinct material transitions. Tidy plantings flank a series of oversize concrete stepping-stones leading to a tiered entry porch. The graphic composition of the entry blends seamlessly with the modern architecture of the house.



One wall of the house reaches into the yard, creating an inviting grass forecourt.

A planar roof that is appropriate to the rectilinear composition of the house shelters the entry door.

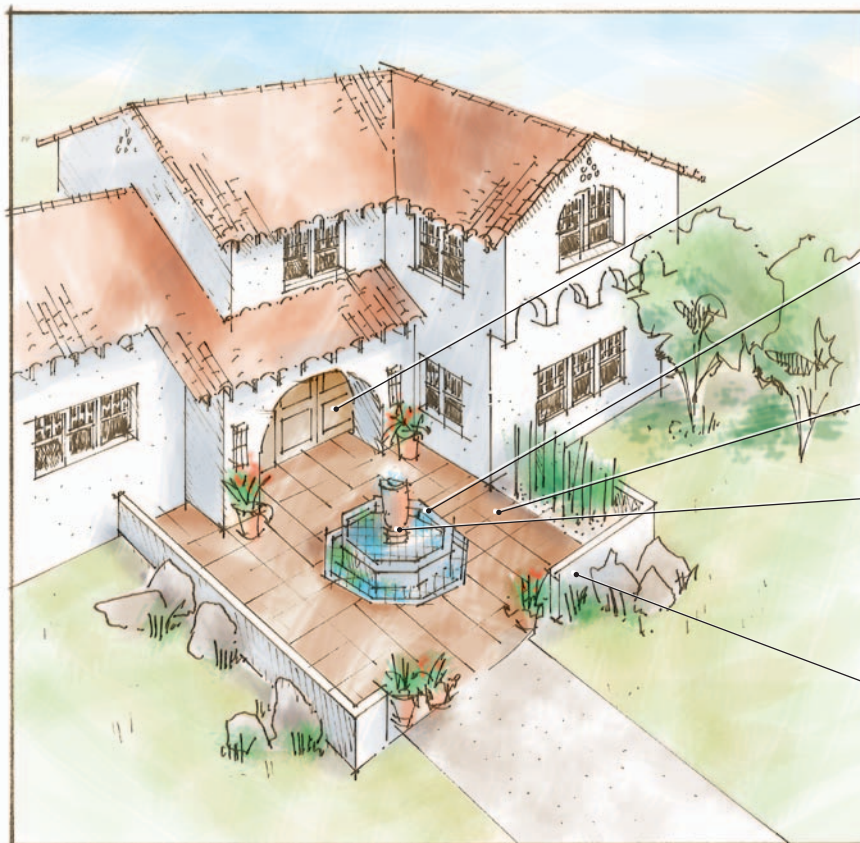
The floor material at the entry extends inside, blurring the distinction between indoors and out.

Bunches of plants help to soften the sharp edges of the modern style.

Precise geometric pavers and planter boxes that echo the angular geometry of the house provide a clear path to the front door.

## SOUTHWEST

A tiled courtyard and fountain are the focus of the entry to this Southwest-style home. In dry climates where opportunities for gardening are limited, hardscapes are the norm. Earth-tone colors and textures predominate. Accent tiles and a few carefully chosen plants bring a splash of color to this manmade oasis. The entry to the home is set beneath an upper-story deck, providing a respite from the intense sun before continuing inside.



A deep arched overhang frames a rounded entry door and provides protection from the weather.

Colorful accent tiles in the courtyard offer a contrast to the earth tones in places where flowers won't thrive.

Earth-tone tiles reflect the colors of the surrounding terrain and link the courtyard to its natural setting.

The gentle trickling of the fountain provides a soothing aural experience as you approach the house.

A low wall at the perimeter of the courtyard delineates a semipublic space that mediates between the privacy of home and the bustle of the outside world.